

# ISO CNOMO Standard Solenoid Valve Metal Seal - SIZES ①②③

## Series VS7-6•8•10



VS7-6-□□□□  
Size ①



VS7-8-□□□□  
Size ②



VS7-10-□□□□  
Size ③

2 position	Single solenoid (FG-S)	Double solenoids (FG-D)		
3 position	Closed centre (FHG-D)	Exhaust centre (FJG-D)	Pressure centre (FIG-D)	

### Standard Specifications

Fluid		Air and inert gas	
Operating pressure (MPa)	Single	2 position	0.15 to 0.9
	Double	2 position	0.1 to 0.9
		3 position	0.15 to 0.9
Ambient and fluid temperature		Max. 50°C	
Manual operation		Non-locking	
Electrical entry		DIN43650 connector	
Lubrication		Unnecessary (Turbine oil class 1 - ISO VG32 if used)	
Environmental protection rating		IP65	
Shock/Vibration resistance		300/50m/s <sup>2</sup>	



Note 1) Shock resistance: No malfunction resulted from the impact test using a drop impact tester.

The test was performed on the axis and right angle direction of the main valve and armature, for both energized and de-energized states.

Vibration resistance: No malfunction occurred in a one-sweep test between 8.3 and 2000Hz.

Test was performed at both energized and de-energized states to the axis and right angle direction of the main valve and armature. (value in the initial stage.)

- Solenoid interface conforms to CNOMO.
- Manifold interface to ISO standards.
- Low power consumption: 1.8W per solenoid.
- Internal or external pilot supply.
- Available in ISO 1, 2 and 3 sizes.
- Large flow capacity.
- Fast response and long life.

### Pilot Valve Specifications

Rated voltage (V)		100V AC 50/60Hz, 200V AC 50/60Hz, 24V DC, 12V DC	
Power consumption	DC (W)	1.8	
	AC Inrush current (VA)	5.4	
	AC Holding current (VA)	3.6	
Allowable voltage (V)		-15% to +10% of rated voltage	
Coil insulation		Class B (130°C) or equivalent	

### Model

No. of positions	Model	Flow (Nl/min)	Max. operating frequency (Hz)	Response time (Ms)	Weight (g)
------------------	-------	---------------	-------------------------------	--------------------	------------

#### Size ①

2 (Single)	VS7-6-FG-S-□-Q	1476	20	25	420
2 (Double)	VS7-6-FG-D-□-Q	1476	20	15	518
3 (Closed centre)	VS7-6-FHG-D-□-Q	1378	10	45	546
3 (Exhaust centre)	VS7-6-FJG-D-□-Q	1476	10	45	546
3 (Pressure centre)	VP7-6-FIG-D-□-Q	1080	10	45	546

#### Size ②

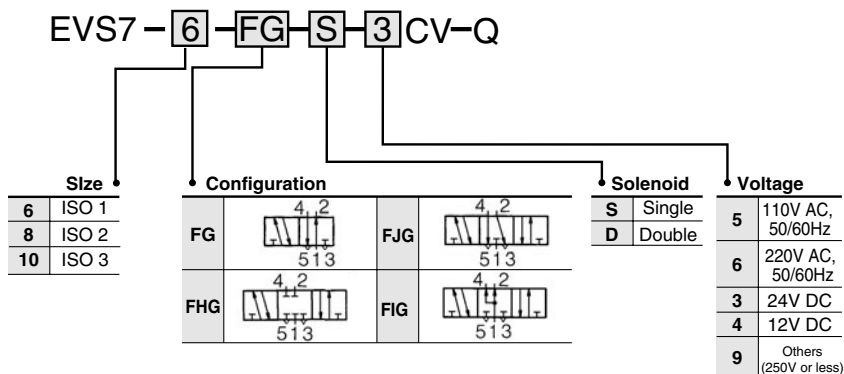
2 (Single)	VS7-8-FG-S-□-Q	3148	20	25	698
2 (Double)	VS7-8-FG-D-□-Q	3148	20	15	806
3 (Closed centre)	VS7-8-FHG-D-□-Q	3148	10	45	850
3 (Exhaust centre)	VS7-8-FJG-D-□-Q	3148	10	45	850
3 (Pressure centre)	VS7-8-FIG-D-□-Q	3148	10	45	850

#### Size ③

2 (Single)	VS7-10-FG-S-□-Q	4900	20	25	926
2 (Double)	VS7-10-FG-D-□-Q	4900	20	15	1026
3 (Closed centre)	VS7-10-FHG-D-□-Q	4690	10	45	1080
3 (Exhaust centre)	VS7-10-FJG-D-□-Q	4690	10	45	1080
3 (Pressure centre)	VS7-10-FIG-D-□-Q	4690	10	45	1080

# VS7-6•8•10

## How to Order Valve



Contact SMC for other voltages (9)

## How to Order Sub-plate - Size ①

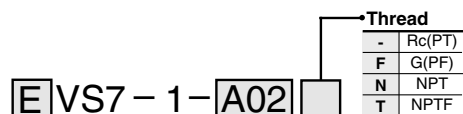
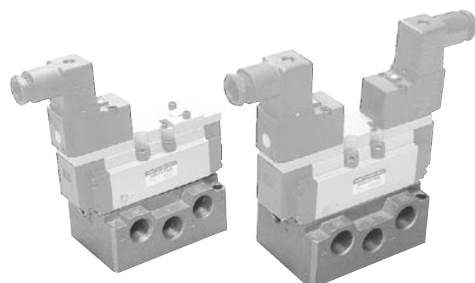


### Specifications

Applicable solenoid valve	ISO size 1
Sub-plate size	ISO size 1
Piping*	Side piping, 1/4 3/8
	Bottom piping, 1/4 3/8
Weight	0.37kg

\*) All R ports: 3/8

### How to Order Sub-plate



#### Ordering source area code

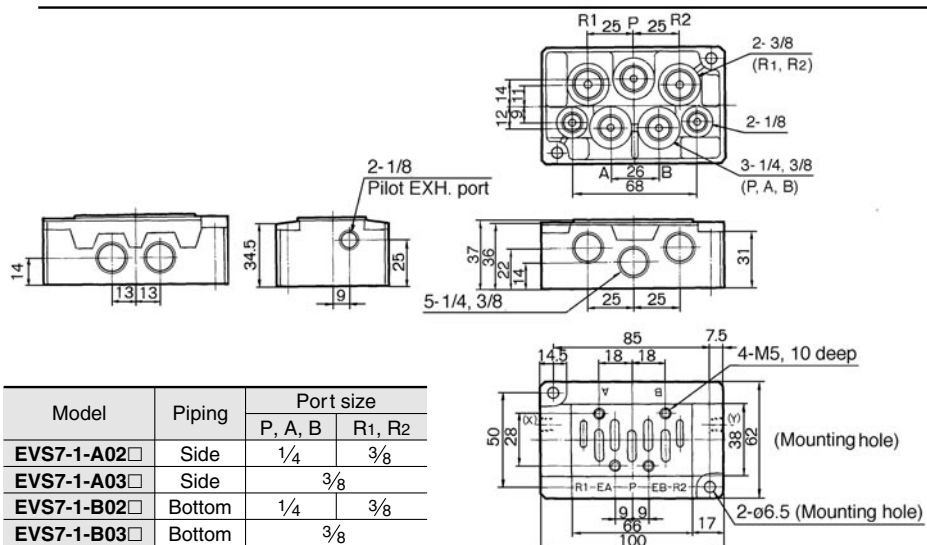
Code	areas
-	Japan, Asia Australia
E	Europe
N	North America

#### Piping and port size

A02	Side* 1/4
A03	Side 3/8
B02	Bottom* 1/4
B03	Bottom 3/8

\*R port: 3/8

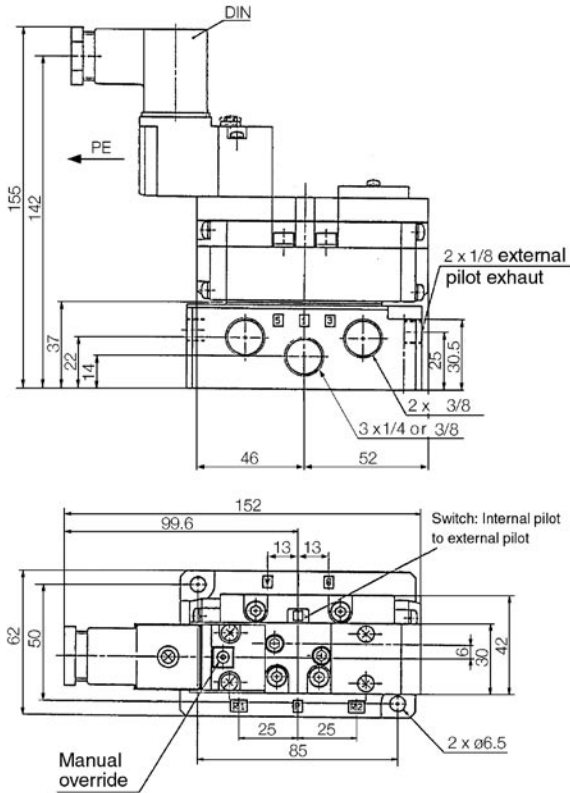
### Dimensions



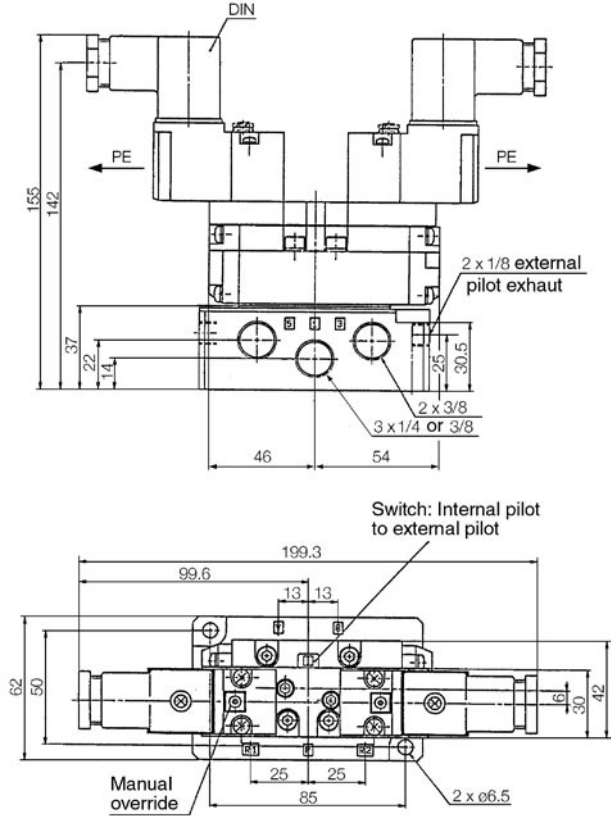
# ISO/CNOMO type VS7-6•8•10

## Dimensions with Sub-plate - Size ①

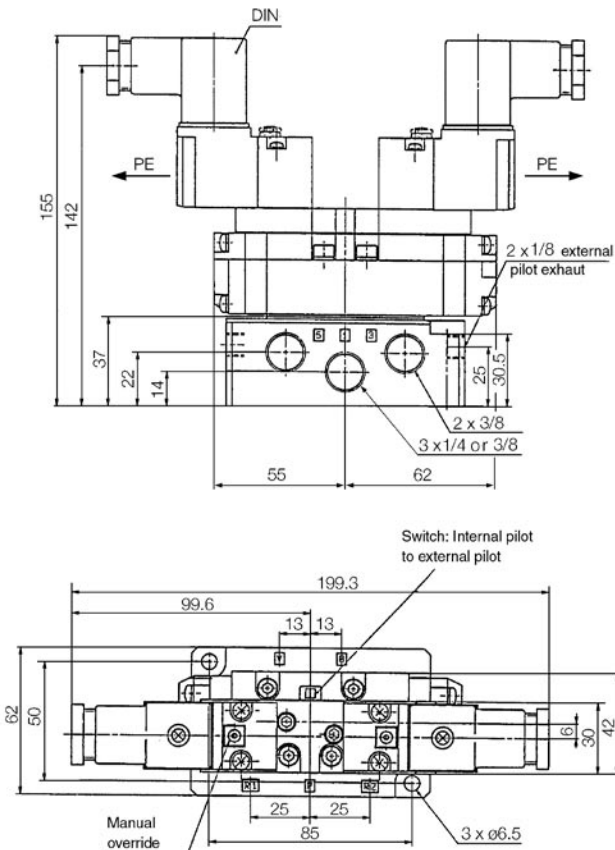
**EVS7-6-FG-S-□CV-Q**



**EVS7-6-FG-D-□CV-Q**



**EVS7-6-FHG-D-□CV-Q • EVS7-6-FJG-D-□CV-Q • EVS7-6-FIG-D-□CV-Q**



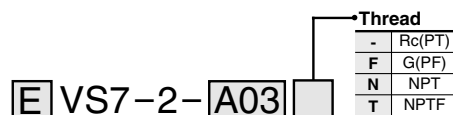
# VS7-6•8•10

## How to Order Sub-plate - Size ②



Applicable solenoid valve	ISO size 2
Sub-plate size	ISO size 2
Piping	Side piping: 3/8, 1/2, 3/4
	Bottom piping: 3/8, 1/2, 3/4
Weight	0.68 (3/8, 1/2) 1.29 (3/4)

## How to Order Sub-plate

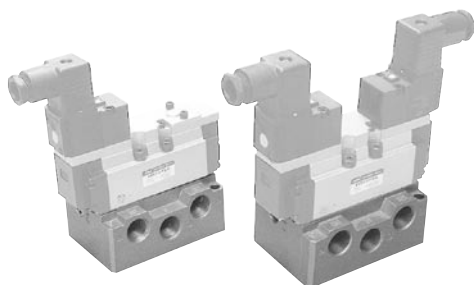


### Ordering source area code

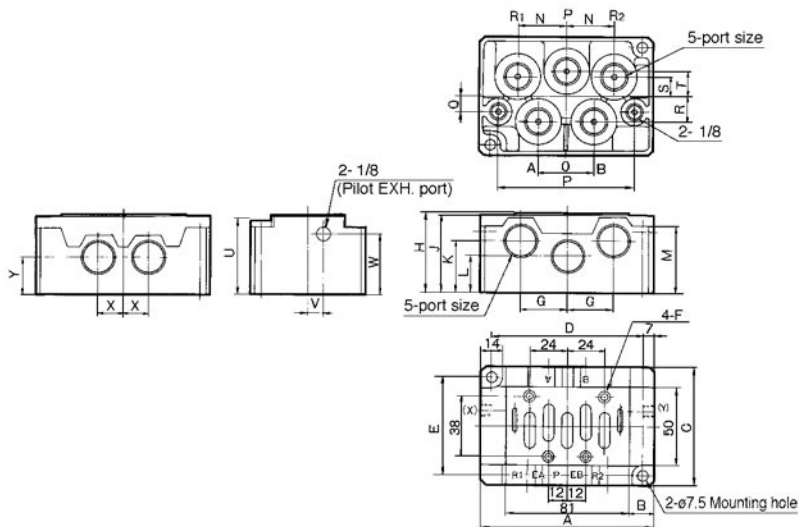
Code	areas
-	Japan, Asia Australia
E	Europe
N	North America

### Piping and Port size

<b>A03</b>	Side 3/8
<b>A04</b>	Side 1/2
<b>A06</b>	Side 3/4
<b>B03</b>	Bottom 3/8
<b>B04</b>	Bottom 1/2
<b>B06</b>	Bottom 3/4



## Dimensions

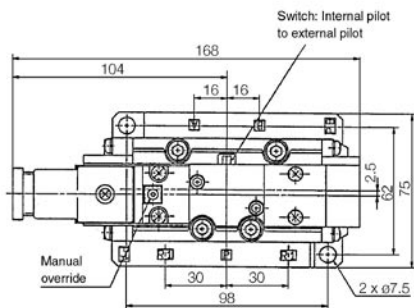
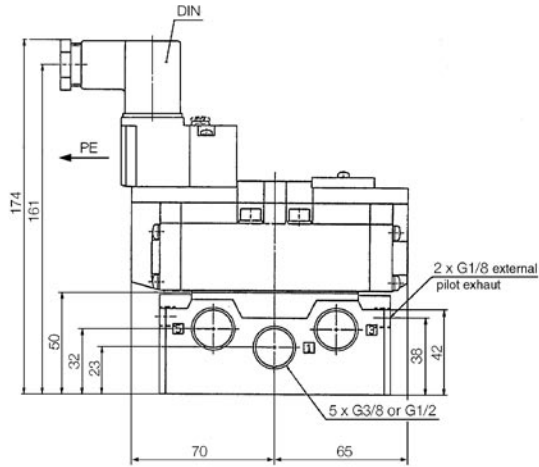


	Piping	Port size	A	B	C	D	E	F	G	H	J	K	L	M	N	O	P	Q	R	S	T	U	V	W	X	Y
<b>EV7-2-A03</b>	Side	3/8, 1/2	112	15.5	75	98	62	4-M6, 12 Deep	30	50	49	32	23	42	31	36	88	10	16	12	16	47.5	10	38	16	23
<b>EV7-2-B03</b>			Bottom	142	30.5	86	128		72	42	63	62	42	30	55	42	40	116	11	22	16	23	60	11	53	20
<b>EV7-2-A06</b>	Side	3/4	142	30.5	86	128	72	4-M6, 12 Deep	42	63	62	42	30	55	42	40	116	11	22	16	23	60	11	53	20	30
<b>EV7-2-B06</b>	Bottom		142	30.5	86	128	72		42	63	62	42	30	55	42	40	116	11	22	16	23	60	11	53	20	30

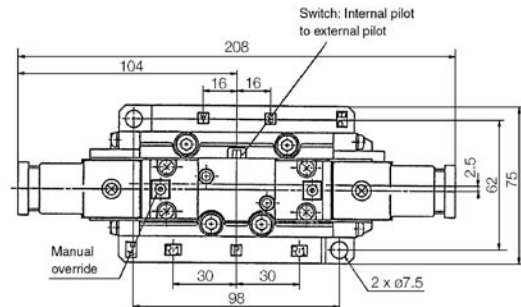
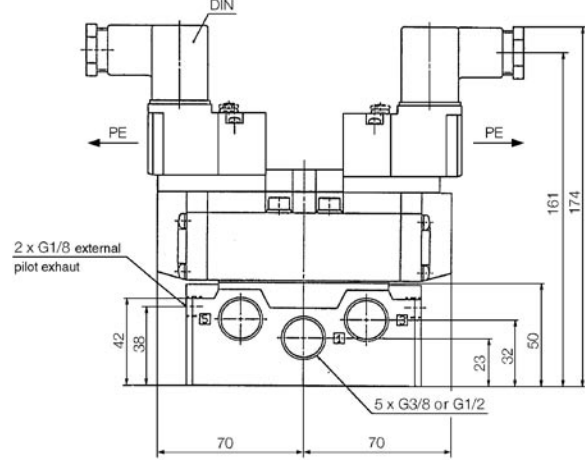
# ISO/CNOMO type VS7-6•8•10

## Dimensions with Sub-plate - Size ②

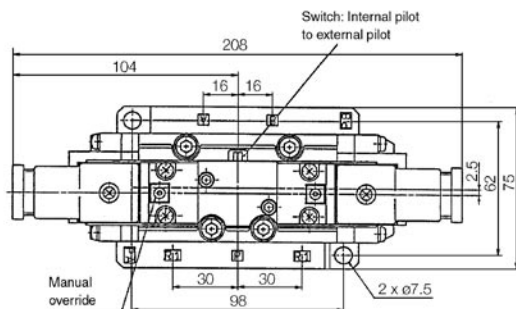
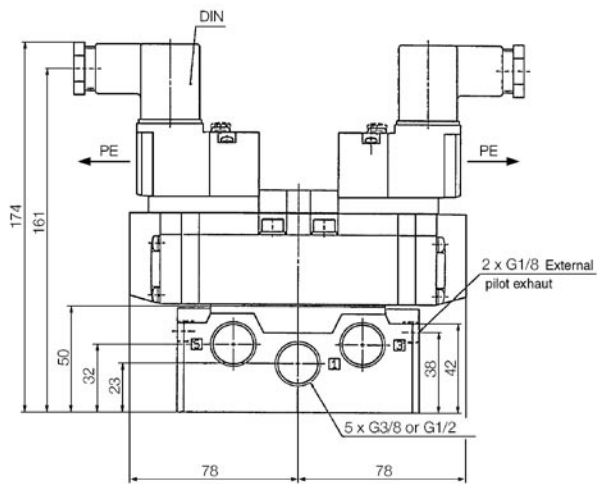
**EVS7-8-FG-S-□CV-Q**



**EVS7-8-FG-D-□CV-Q**



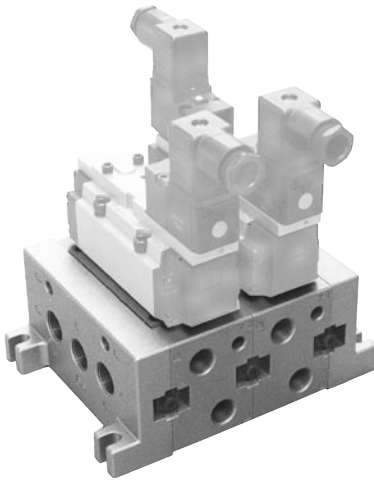
**EVS7-8-FHG-D-□CV-Q • EVS7-8-FJG-D-□CV-Q • EVS7-8-FIG-D-□CV-Q**



# VS7-6•8•10

## How to Order Manifold

---



### Specifications

---



\*) These are available for ISO1 and ISO2 size manifolds and are common to those and on the VS7-6/8 and VQ7-6/8 series valves. For more details on Specifications, options, how to order and dimensions please refer to these series.

### How to Order Manifold

---



\*) These are available for ISO1 and ISO2 size manifolds and are common to those and on the VS7-6/8 and VQ7-6/8 series valves. For more details on Specifications, options, how to order and dimensions please refer to these series.

### Options

---



\*) These are available for ISO1 and ISO2 size manifolds and are common to those and on the VS7-6/8 and VQ7-6/8 series valves. For more details on Specifications, options, how to order and dimensions please refer to these series.

### Dimensions

---



\*) These are available for ISO1 and ISO2 size manifolds and are common to those and on the VS7-6/8 and VQ7-6/8 series valves. For more details on Specifications, options, how to order and dimensions please refer to these series.